

# San Joaquin County Mid-Year 2009 STD Report

Table 1: STDs in San Joaquin County for 1st and 2nd Quarter 2008-2009

	2008		2009	
	1st Qtr	2nd Qtr	1st Qtr	2nd Qtr
Gonorrhea	192	165	147	122
Chlamydia	873	892	902	840
Syphilis	7	3	14	25
1 & 2	1	0	4	7
Early latent	3	2	3	4
Unk. Latent	1	0	0	5
Late latent	2	1	7	9

Figure 1. STD cases in SJC by city of residence, January-June 2009

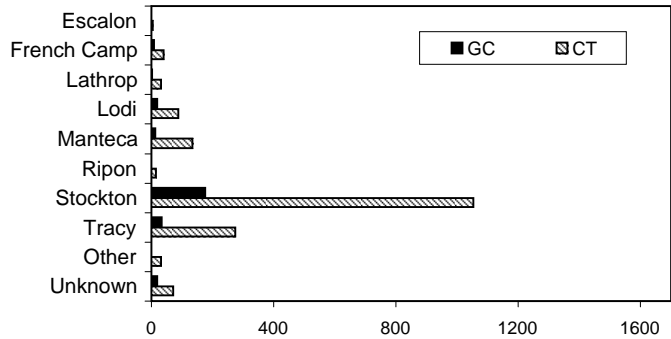


Figure 2. Monthly GC trends for SJC

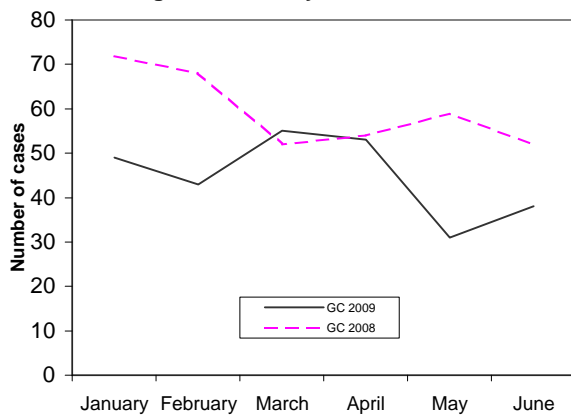


Figure 3. Monthly CT trends for SJC

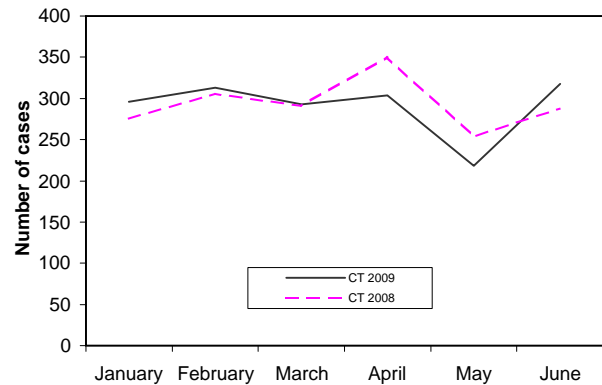


Table 2: Gonorrhea cases in SJC by age and gender, January-June 2009

Age category	Gonorrhea		
	Female	Male	Total
0-4	0	0	0
5-9	0	0	0
10-14	3	0	3
15-19	67	18	85
20-24	52	39	91
25-29	15	17	32
30-34	11	11	22
35-39*	4	6	10
40-44	1	7	8
45-54	4	10	14
55-64	0	3	3
65+	0	0	0
unknown	0	0	0
<b>TOTAL</b>	<b>157</b>	<b>111</b>	<b>268</b>

\* for one case in this age group gender was not reported

Table 3: Chlamydia cases in SJC by age and gender, January-June 2009

Age category	Chlamydia		
	Female	Male	Total
0-4	0	0	0
5-9	2	0	2
10-14*	14	2	16
15-19*	464	107	571
20-24*	462	181	643
25-29	174	131	305
30-34	61	35	96
35-39	30	15	45
40-44	15	13	28
45-54	16	7	23
55-64	4	3	7
65+	0	1	1
unknown	1	1	2
<b>TOTAL</b>	<b>1243</b>	<b>496</b>	<b>1739</b>

\* for one case in these age groups gender was not reported

Note: All statistics are provisional until the annual report is released for the year. Morbidity is based on the date of report. Totals for past month may change due to additions and/or deletions from the database.