

**Current Influenza Activity**

**San Joaquin County**

- As of 1/2/10, there were a total of 218 hospitalized cases of 2009 H1N1 influenza reported in SJC. This includes 59 ICU cases and 14 fatal cases of 2009 H1N1 influenza.

**California**

- In CA, 2009 H1N1 influenza activity has been downgraded from widespread to regional. Most indicators suggest that illness may be declining, with levels of illness approaching the normal range for this time of year.
- As of 1/2/10, there have been 8,308 hospitalizations and/or fatal cases of 2009 H1N1 influenza reported to CDPH. Of these cases, 1,712 cases required intensive care. A total of 470 deaths due to 2009 H1N1 influenza have been reported to CDPH.
- Fatal cases (304, 82%) are still significantly less likely to receive antiviral treatment than non-fatal ICU cases (1294, 93%). Likewise, among those with known dates of antiviral treatment, a smaller proportion of fatal cases received antiviral treatment within 48 hours of illness onset (38, 15%) as compared to non-fatal ICU cases (330, 38%). The presence of secondary bacterial infection remains significantly higher among fatal cases (67, 15%) as compared to non-fatal ICU cases (150, 9%), the most common being *Staphylococcus aureus*.
- 2009 H1N1 influenza remains the predominant strain circulating in CA. However, detections for influenza A are decreasing while detections for respiratory syncytial virus (RSV) continue to increase.

**Table 1.** Respiratory Laboratory Network (RLN)\* Influenza PCR Surveillance Results, Week 52 (Dec. 27, 2009 – Jan. 2, 2010)

	Total Flu A Tested	Flu A (% of total)	Seasonal H1 (% of Flu A)	Seasonal H3 (% of Flu A)	Unsubtype-able** (% of Flu A)
All RLN	479	41 (9%)	0 (0%)	0 (0%)	40 (98%)
Northern	191	12 (6%)	0 (0%)	0 (0%)	11 (92%)
Central	71	7 (10%)	0 (0%)	0 (0%)	7 (100%)
Southern	217	22 (10%)	0 (0%)	0 (0%)	22 (100%)

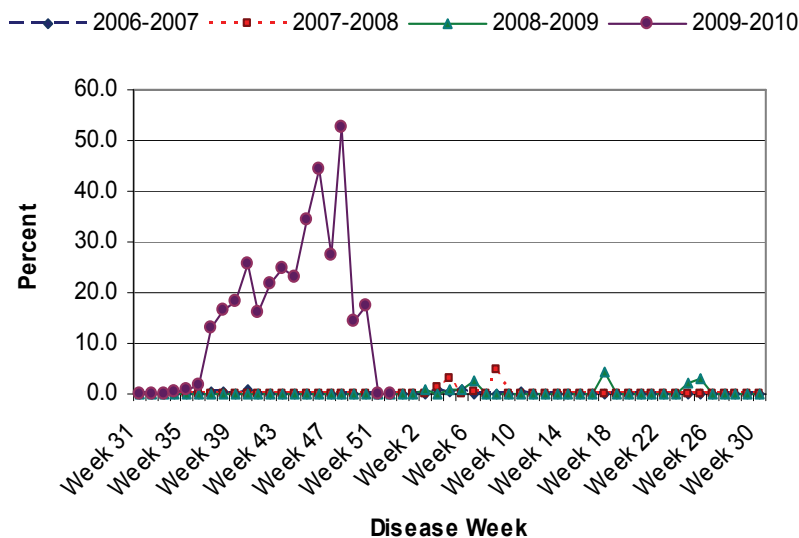
\*17 RLN Public Health Laboratories reporting, including:  
Northern CA: Contra Costa, El Dorado, Monterey, Sacramento, Shasta, Santa Clara, Sonoma  
Central CA: Fresno, San Joaquin, Tulare  
Southern CA: Long Beach, Los Angeles, Orange, San Luis Obispo, Santa Barbara, San Diego, Ventura

\*\*At this time, Unsubtypeable Flu A is presumed to be H1N1

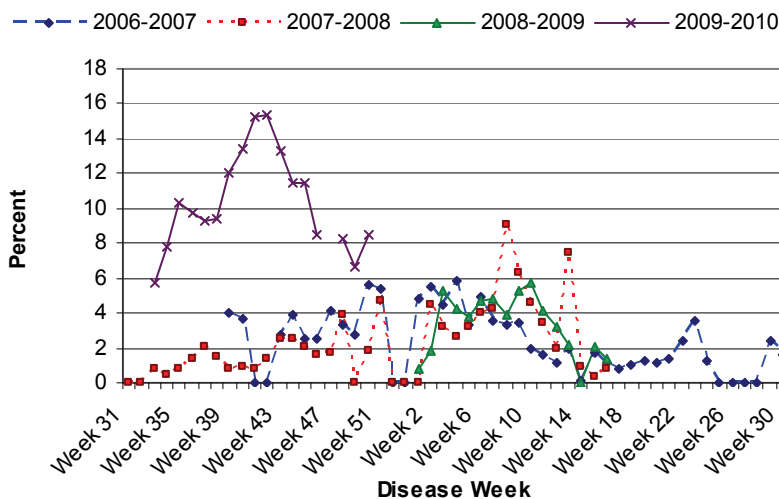
**United States**

- According to the Centers for Disease Control and Prevention (CDC), flu indicators for the Christmas week were mixed. Only 4 states had widespread flu activity, but outpatient medical visits for flu-like illness, which were at the national baseline the previous week, edged back above that level, reaching 3.2%. Also, deaths due to pneumonia and flu climbed above the epidemic threshold.

**Figure 1.** Stockton sentinel provider ILI rates by disease week, 2006-2010.



**Figure 2.** Percent of school absences due to ILI by disease week, Manteca Unified School District, 2006-2010.\*\*\*



\*\*\*Manteca Unified schools were on holiday break during Week 47 (11/22/09 - 11/28/09) and Weeks 51 and 52 (12/20/09 - 1/2/10).