

Current Influenza Activity

San Joaquin County

- As of 11/28/09, there were 190 hospitalized and 13 fatal cases of 2009 H1N1 influenza reported in SJC.

California

- In CA, 2009 H1N1 influenza continues to be widespread. While some indicators suggest that illness may be leveling off, levels of illness remain above normal for this time of year.
- Reported cases of new hospitalizations are higher this week compared to last week. The rate of hospitalization remains highest among children < 1 year of age.
- Outpatient influenza like illness (ILI) activity continues to be above expected levels for this time of year; however, the percent of visits for ILI appears to be leveling off or decreasing somewhat.
- As of 11/28/09, there have been 7,268 hospitalizations and/or fatal cases of 2009 H1N1 influenza reported to CDPH. Of these cases, 1,331 cases required intensive care. A total of 366 deaths due to 2009 H1N1 influenza have been reported to CDPH.
- The CA statewide incidence rate of hospitalizations and fatalities due to 2009 H1N1 influenza is 18.8 per 100,000 population.

Figure 1. Stockton sentinel provider ILI rates by disease week, 2006-2009

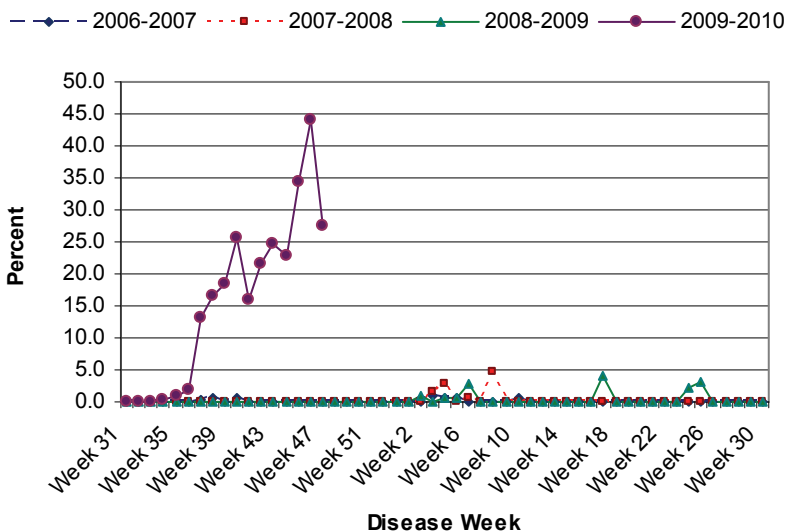
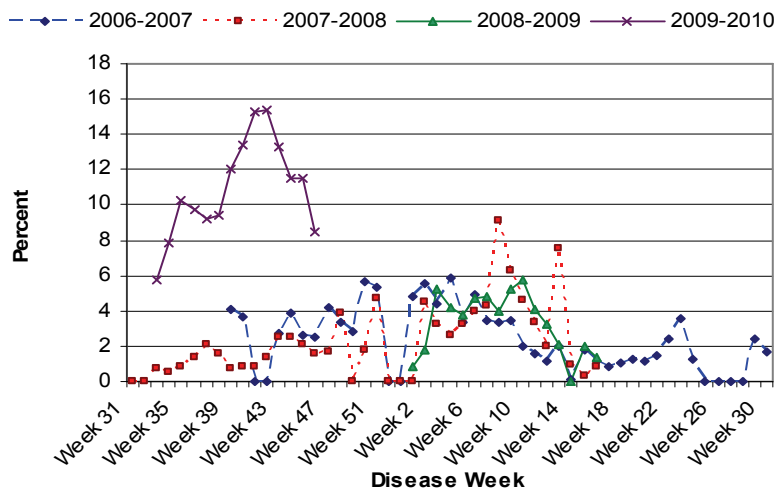


Figure 2. Percent of school absences due to ILI by disease week, Manteca Unified School District, 2006-2009.***



***Manteca Unified schools were on holiday break during Week 47 (11/22/09—11/28/09).

Table 1. Respiratory Laboratory Network (RLN)* Influenza PCR Surveillance Results, Week 47 (Nov. 22 – Nov. 28, 2009)

	Total Flu A Tested	Flu A (% of total)	Seasonal H1 (% of Flu A)	Seasonal H3 (% of Flu A)	Unsubtype-able** (% of Flu A)
All RLN	512	75 (15%)	0 (0%)	0 (0%)	73 (97%)
Northern	128	21 (16%)	0 (0%)	0 (0%)	21 (100%)
Central	164	16 (10%)	2 (12.5%)	0 (0%)	14 (87.5%)
Southern	220	38 (17%)	0 (0%)	0 (0%)	38 (100%)

*16 RLN Public Health Laboratories reporting, including:
Northern CA: Contra Costa, El Dorado, Monterey, San Francisco, Shasta, San Mateo
Central CA: Fresno, San Joaquin, Tulare
Southern CA: Long Beach, Los Angeles, Riverside, San Luis Obispo, Santa Barbara, Ventura

**At this time, Unsubtypeable Flu A is presumed to be H1N1

United States / Worldwide

- According to Dr. Martin Cetron, director of the Centers for Disease Control (CDC) division of Global Migration and Quarantine, the estimated case fatality rate (CFR) for 2009 H1N1 influenza is currently 0.018%, about 100 fold lower than the 2% CFR in the pandemic of 1918-1919.
- In specimens collected since April 2009, a total of 21 oseltamivir-resistant cases have been identified in the United States. The World Health Organization (WHO) is awaiting more details on the clusters of oseltamivir-resistant 2009 H1N1 influenza cases in both the US and Wales, but doesn't think they signal a major shift in the virus, as these clusters involve severely immunocompromised patients.