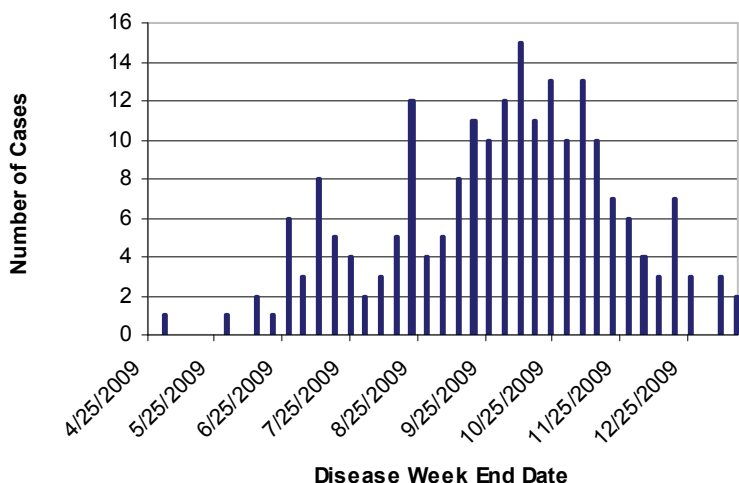


**\*\* This is the final Influenza Report for the 2009-2010 flu season. \*\***

**Local, National and Global Perspective**

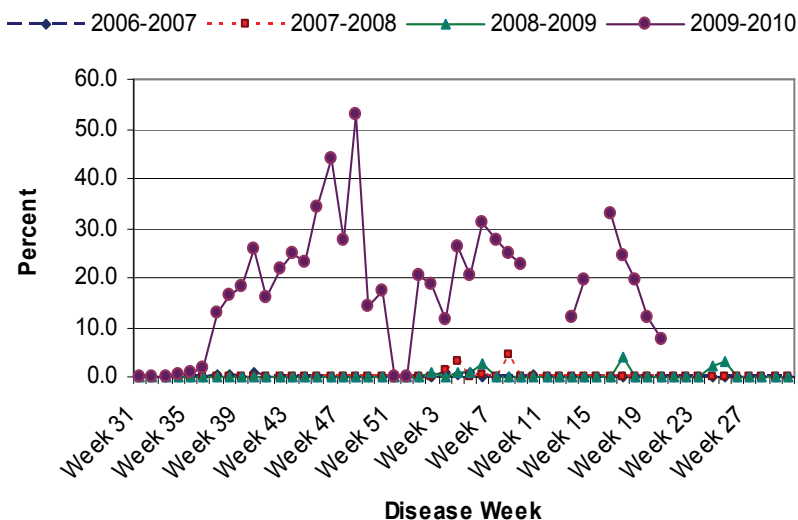
- San Joaquin County (SJC) continues to have minimal influenza activity. No new hospitalized cases of influenza like illness (ILI) have been reported to Public Health Services since January 2010.
- National flu activity also continues to decline. Because sporadic cases of 2009 H1N1 continue to be detected in the United States and the 2009 H1N1 virus is being reported in other parts of the world, CDC continues to encourage 2009 H1N1 vaccination for anyone who wants to protect themselves against 2009 H1N1.

**Figure 1. Weekly number of hospitalizations due to 2009 H1N1 influenza, San Joaquin County, 4/19/09 - 3/13/10 (n=215).\***



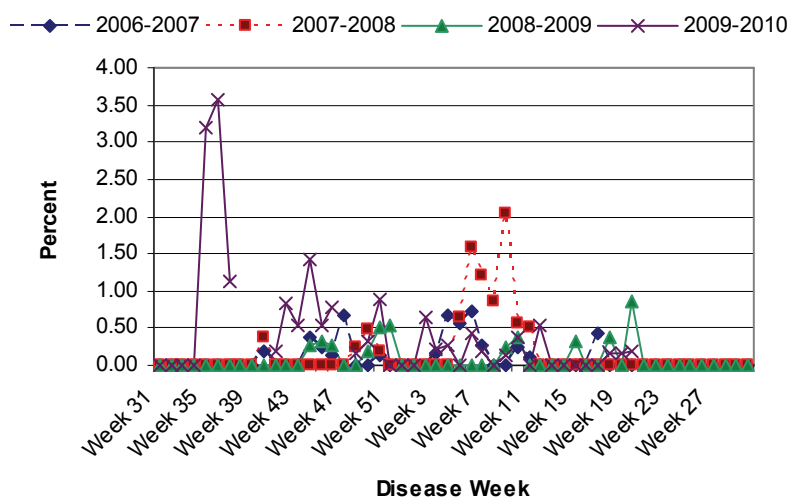
\* Date of hospitalization determined by the lab specimen collection date.

**Figure 2. Stockton sentinel provider ILI rates by disease week, 2006-2010.\*\***

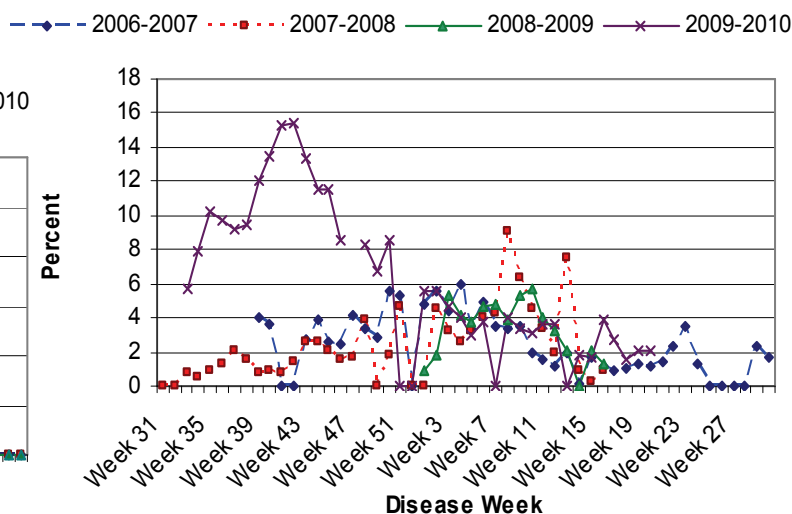


\*\* No Stockton sentinel provider data available for Weeks 51 and 52 (12/20/09-1/2/10), Weeks 10-12 (3/7/10-3/27/10) and Week 15 (4/11/10 – 4/17/10).

**Figure 3. Percent of clinic visits due to ILI in Stockton Unified schools by disease week, 2006-2010.\*\*\***



**Figure 4. Percent of school absences due to ILI by disease week, Manteca Unified School District, 2006-2010.\*\*\*\***



\*\*\*Stockton Unified schools were on holiday break during Week 47 (11/22/09 - 11/28/09), Weeks 51 and 52 (12/20/09 -1/2/10) and Week 13 (3/28/10-4/3/10).

\*\*\*\* Manteca Unified schools were on holiday break during Week 47 (11/22/09-11/28/09), Weeks 51 and 52 (12/20/09-1/2/10), Week 7 (2/14/10-2/20/10) and Week 13 (3/28/10-4/3/10).