

Current Influenza Activity

San Joaquin County

- As of 12/20/09, there were a total of 212 hospitalized cases of 2009 H1N1 influenza reported in SJC. This includes 58 ICU cases and 13 fatal cases of 2009 H1N1 influenza.

California

- In CA, 2009 H1N1 influenza continues to be widespread. Most indicators suggest that illness may be declining, with levels of illness approaching the normal range for this time of year.
- A total of 209 new cases were reported to the CA Dept. of Public Health (CDPH) this week, 81 of which were from 12/13/09-12/19/09 and 128 of which were delayed reports from prior to 12/13/09.
- As of 12/19/09, there have been 8,003 hospitalizations and/or fatal cases of 2009 H1N1 influenza reported to CDPH. Of these cases, 1,590 cases required intensive care. A total of 449 deaths due to 2009 H1N1 influenza have been reported to CDPH.
- This week, the CA Viral and Rickettsial Disease Laboratory (VRDL) identified 1 new case of oseltamivir resistance in a resident of San Francisco County. A total of 5 cases of oseltamivir resistance have been identified in CA residents.

Table 1. Respiratory Laboratory Network (RLN)* Influenza PCR Surveillance Results, Week 50 (Dec. 13 – Dec. 19, 2009)

	Total Flu A Tested	Flu A (% of total)	Seasonal H1 (% of Flu A)	Seasonal H3 (% of Flu A)	Unsubtype-able** (% of Flu A)
All RLN	466	84 (18%)	2 (0.4%)	1 (0.2%)	81 (96%)
Northern	254	46 (18%)	0 (0%)	1 (0%)	45 (98%)
Central	71	10 (14%)	2 (2.8%)	0 (0%)	8 (100%)
Southern	141	28 (20%)	0 (0%)	0 (0%)	28 (100%)

*16 RLN Public Health Laboratories reporting, including:
 Northern CA: Contra Costa, El Dorado, Monterey, Sacramento, Shasta, Santa Clara, San Francisco, Sonoma, San Mateo
 Central CA: Fresno, Tulare
 Southern CA: Long Beach, Los Angeles, Orange, San Luis Obispo, Santa Barbara

**At this time, Unsubtypeable Flu A is presumed to be H1N1

United States / Worldwide

- Vaccine doses are expected to reach 100 million by the end of the week and nearly half of the states have opened up immunization to anyone that wants it.
- According to the World Health Organization (WHO), an early look at winter pandemic flu fatalities suggests that severity has not changed. The virus is peaking or declining in many parts of Europe, except for the north, southeast and parts of the Russian Federation. Activity is also rising in western and central Asia. Pandemic and seasonal strains are cocirculating in West Africa.

Figure 1. Percent of clinic visits due to ILI in Stockton Unified schools by disease week, 2006-2009.***

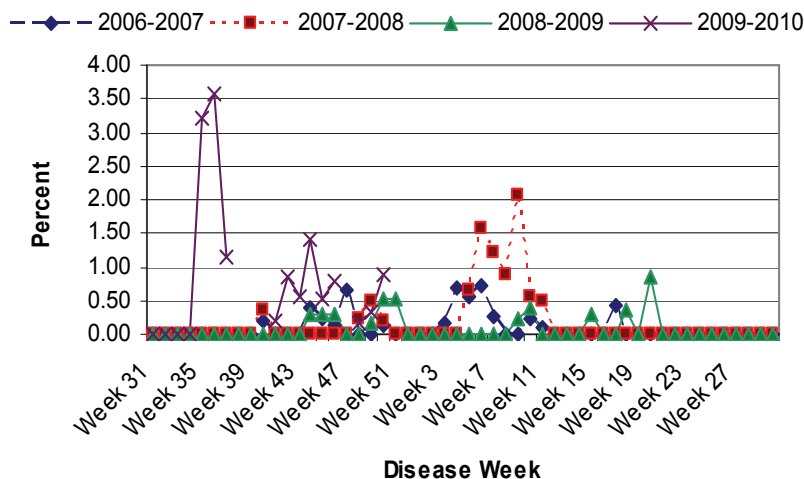
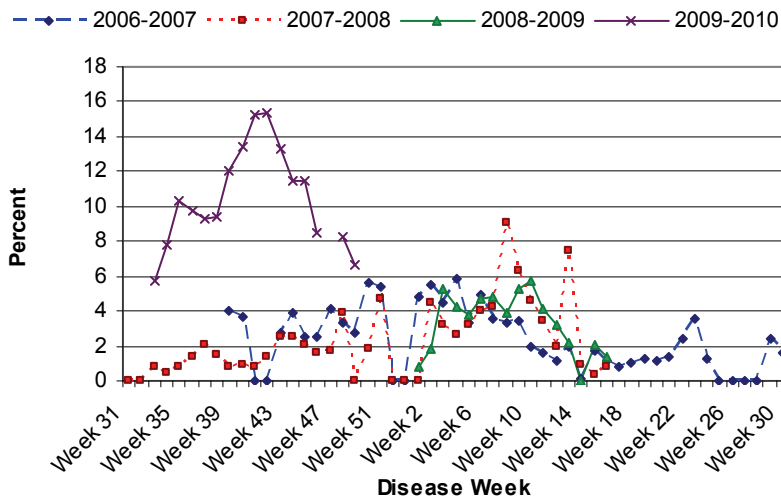


Figure 2. Percent of school absences due to ILI by disease week, Manteca Unified School District, 2006-2009.***



***Manteca and Stockton Unified schools were on holiday break during Week 47 (11/22/09—11/28/09).

There is no Week 50 (12/13/09-12/19/09) update for the Manteca Unified schools.