

Current Influenza Activity

San Joaquin County

- As of 1/30/10, there were a total of 223 hospitalized cases of 2009 H1N1 influenza reported in SJC. This includes 60 ICU cases and 16 fatal cases of 2009 H1N1 influenza.
- No new 2009 H1N1 influenza hospitalizations or fatalities were reported to SJC PHS during the week of 1/24/10.

California

- In CA, 2009 H1N1 influenza activity remains “sporadic” this week. Reports of ILI from sentinel providers continue to decrease.
- As of 1/30/10, there have been 8,641 hospitalizations and/or fatal cases of 2009 H1N1 influenza reported to CDPH. Of these cases, 1,826 cases required intensive care. A total of 506 deaths due to 2009 H1N1 influenza have been reported to CDPH.
- Laboratory detections of influenza declined, while detections of respiratory syncytial virus (RSV) increased from 21% last week to 30% this week. To date, there have been 2 detections of influenza B reported from the RLN and sentinel laboratories. No isolates were positive for influenza A/H1 or A/H3 this week.

Table 1. Respiratory Laboratory Network (RLN)* Influenza PCR Surveillance Results, Week 4 (Jan. 24 – Jan. 30, 2010)

	Flu A (% of total, N)	Unsubtype-able** (% of Flu A)	Flu B (% of total, N)	RSV (% of total, N)
All RLN	8 (3%, 250)	8 (100%)	1 (1%, 158)	2 (7%, 27)
Northern	5 (3%, 184)	5 (100%)	0 (0%, 115)	1 (20%, 5)
Central	1 (4%, 25)	1 (100%)	0 (0%, 4)	1 (5%, 22)
Southern	2 (5%, 41)	2 (100%)	1 (3%, 39)	0 (0%, 0)

*15 RLN laboratories reporting, including:
 Northern CA: Contra Costa, El Dorado, Marin, Monterey, Sacramento, San Francisco, Santa Clara, Shasta, Sonoma
 Central CA: Fresno, San Joaquin
 Southern CA: Los Angeles, Long Beach, San Luis Obispo, Santa Barbara

**At this time, Unsubtypeable Flu A is presumed to be H1N1

Worldwide

- A recent case series of 43 pregnant women hospitalized with lab confirmed 2009 H1N1 in Victoria (Australia) highlights the risk of influenza infection during pregnancy. In the study, half of all pregnant women had no other identifiable underlying medical condition; however, the overall prevalence of asthma, diabetes and obesity among the group was greater than that observed in the general population of Australia. The study appears in *Clinical Infectious Disease* 2010: 50. <http://www.journals.uchicago.edu/doi/abs/10.1086/650460?rss>
- Although much of the northern hemisphere influenza activity continues to decline, virus transmission remains active in North Africa, parts of Europe, and south and east Asia.

Figure 1. Percent of clinic visits due to ILI in Stockton Unified schools by disease week, 2006-2010.***

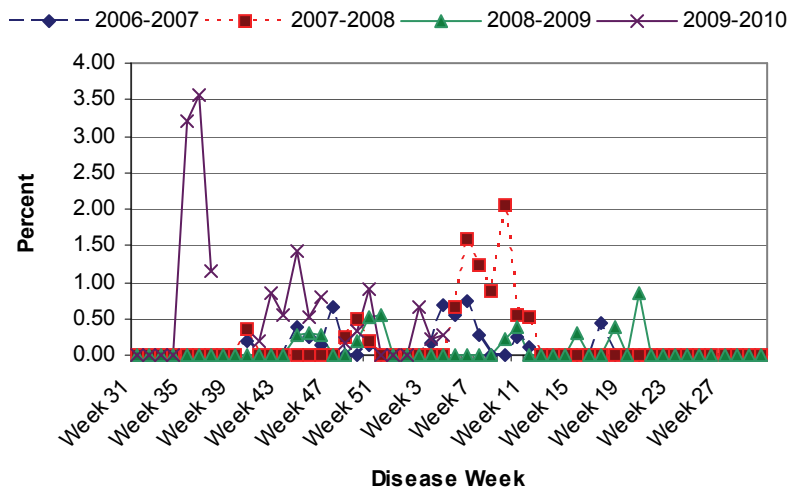
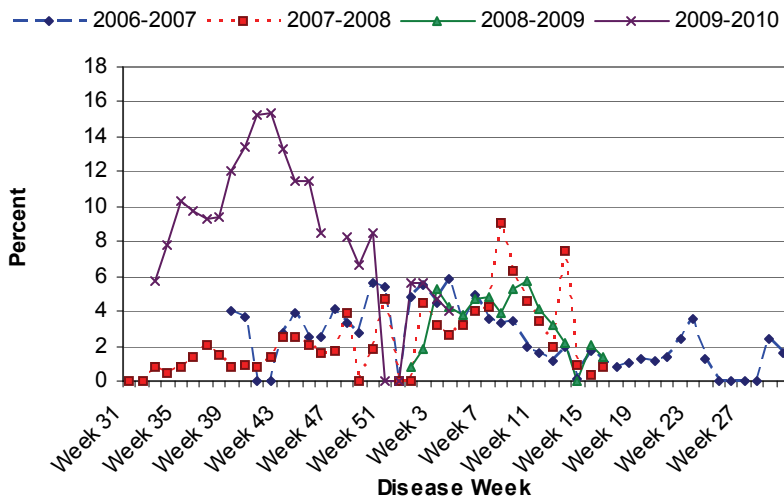


Figure 2. Percent of school absences due to ILI by disease week, Manteca Unified School District, 2006-2010.****



*** Stockton Unified schools were on holiday break during Week 47 (11/22/09 - 11/28/09) and Weeks 51 and 52 (12/20/09 - 1/2/10).

**** Manteca Unified school were on holiday break during Week 47 (11/22/09 - 11/28/09) and Weeks 51 and 52 (12/20/09 - 1/2/10).