

Current Influenza Activity

San Joaquin County

- As of 1/9/10, there were a total of 218 hospitalized cases of 2009 H1N1 influenza reported in SJC. This includes 59 ICU cases and 14 fatal cases of 2009 H1N1 influenza.

California

- In CA, 2009 H1N1 influenza activity has been down-graded from regional to “local” this week. Most indicators suggest that illness may be declining, with levels of illness approaching the normal range for this time of year.
- As of 1/9/10, there have been 8,437 hospitalizations and/or fatal cases of 2009 H1N1 influenza reported to CDPH. Of these cases, 1,746 cases required intensive care. A total of 479 deaths due to 2009 H1N1 influenza have been reported to CDPH.
- In recent weeks, almost all influenza-A positive specimens tested by PCR at VRDL and by the Respiratory Laboratory Network have been subsequently confirmed as 2009 H1N1 influenza, reflecting that the predominant circulating influenza strain in California remains 2009 H1N1 influenza .

Table 1. Respiratory Laboratory Network (RLN)* Influenza PCR Surveillance Results, Week 1 (Jan. 3 – Jan. 9, 2010)

	Total Flu A Tested	Flu A (% of total)	Seasonal H1 (% of Flu A)	Seasonal H3 (% of Flu A)	Unsubtype-able** (% of Flu A)
All RLN	293	16 (5%)	0 (0%)	0 (0%)	16 (100%)
Northern	159	4 (3%)	0 (0%)	0 (0%)	4 (100%)
Central	61	5 (8%)	0 (0%)	0 (0%)	5 (100%)
Southern	76	7 (9%)	0 (0%)	0 (0%)	7 (100%)

*16 RLN laboratories reporting, including:
 Northern CA: Contra Costa, Marin, Monterey, Sacramento, San Francisco, Shasta, Sonoma
 Central CA: Fresno, San Joaquin, Tulare
 Southern CA: Long Beach, Orange, Riverside, San Luis Obispo, Santa Barbara, Ventura

**At this time, Unsubtypeable Flu A is presumed to be H1N1

United States / Worldwide

- In the U.S., the proportion of visits to doctors for influenza-like illness (ILI) decreased to 2.4%, just above the national baseline level (2.3%). Total hospitalization rates for laboratory-confirmed influenza remained elevated for all age groups. Nationally, 7.4% of deaths were attributed to pneumonia and influenza (P&I), lowering the indicator just below the epidemic threshold (7.5%).
- The World Health Organization is recommending that vaccines for use in the **southern hemisphere’s 2010 winter influenza season** contain the following influenza strains:
 - an A/California/7/2009 (H1N1)-like virus
 - an A/Perth/16/2009 (H3N2)-like virus
 - and a B/Brisbane/60/2008-like virus

Figure 1. Percent of clinic visits due to ILI in Stockton Unified schools

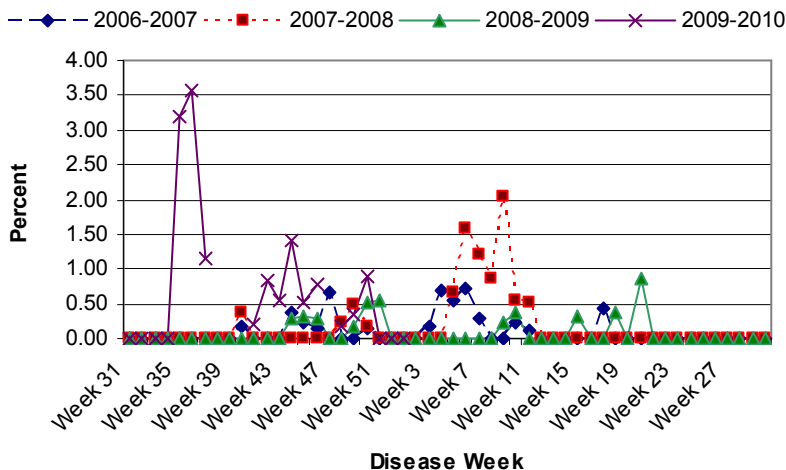
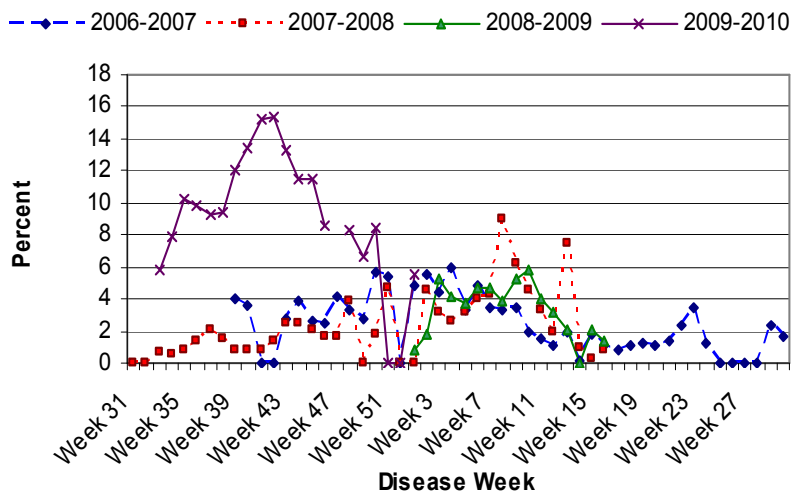


Figure 2. Percent of school absences due to ILI by disease week, Manteca Unified School District, 2006-2010.***



***Manteca and Stockton Unified schools were on holiday break during Week 47 (11/22/09 - 11/28/09) and Weeks 51 and 52 (12/20/09 - 1/2/10).